

lighting force



Introduction

Lighting Force was founded in 1999 by the late Ian Howard, to bring his unique vision to the lighting design profession. Ian had a belief that beautiful lighting can be achieved through simple means and that there is no more important tool in the designer's box than light itself.

Establishing his studio in Battle in South-East England, Ian built a team of "imagineers" to realise his vision. Over the years a clientele has been established in hospitality, residential, retail, public space and commercial environments at home and abroad and we have developed and impressive portfolio of completed work.

Our designers understand not only how to apply light, but the practical implications of integrating lightsources into a building. There is a strong ethos of teamwork, not only in-house, but with other disciplines involved with a project.

Lighting technology is always evolving. We take pride in being ahead of the curve in understanding how new tools enable new solutions to old problems.

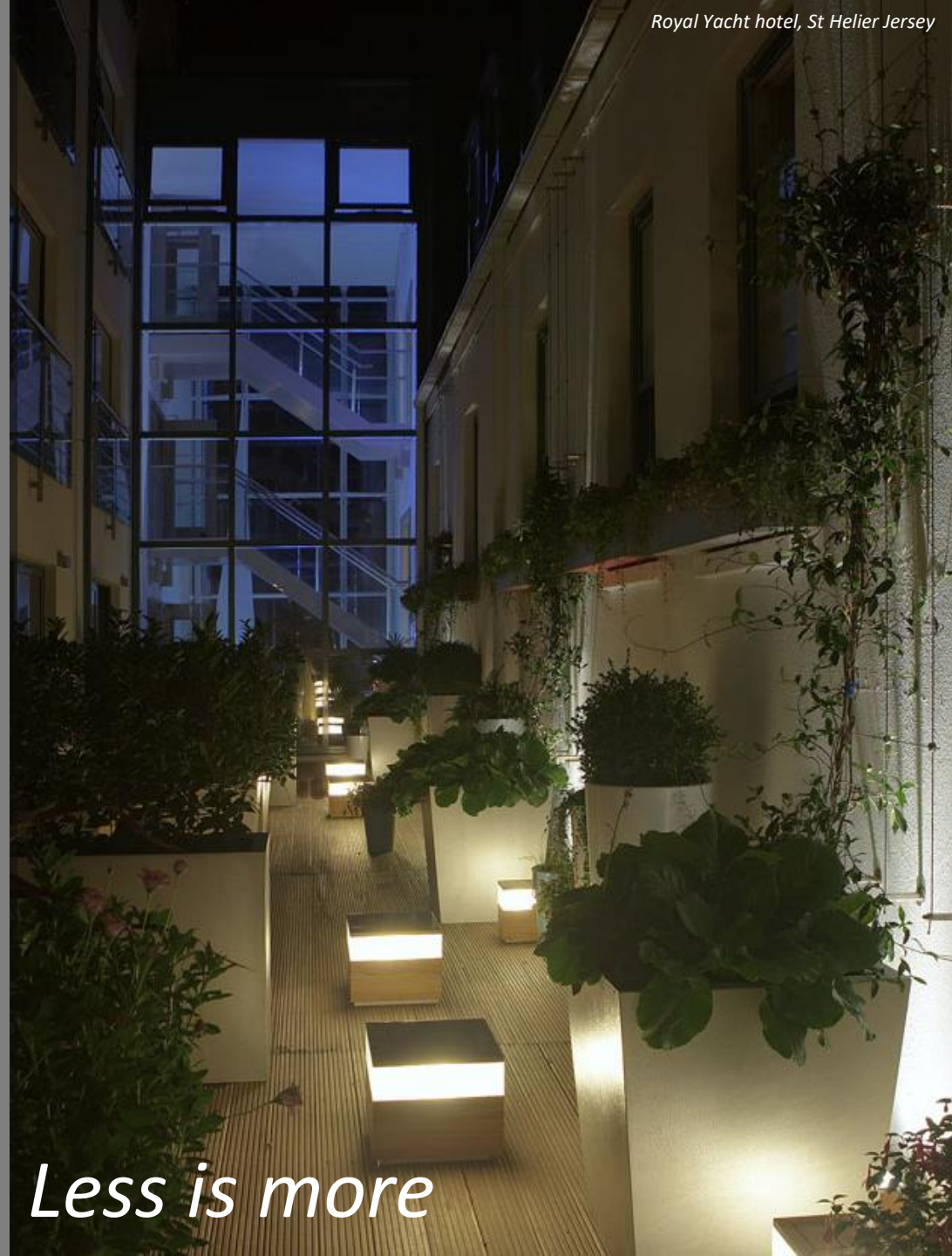
I joined Lighting Force in 2003 and brought my own extensive experience, particularly in outdoor lighting, to the team. Sharing a similar vision to Ian and understanding his approach, I became skilled in the practicalities of bringing his ideas to life. We ran the business as a partnership and on Ian's death in September 2017 I took over as managing director. My aim is for Lighting Force to continue Ian's work of creating beautifully lit spaces using imaginative and practical techniques.

Mark Saunders
April 2018



*Lighting designers
should interpret, not overwhelm...*

*Choose your
feature wisely, Less is more*



Introduce a 'Lady of the House'..

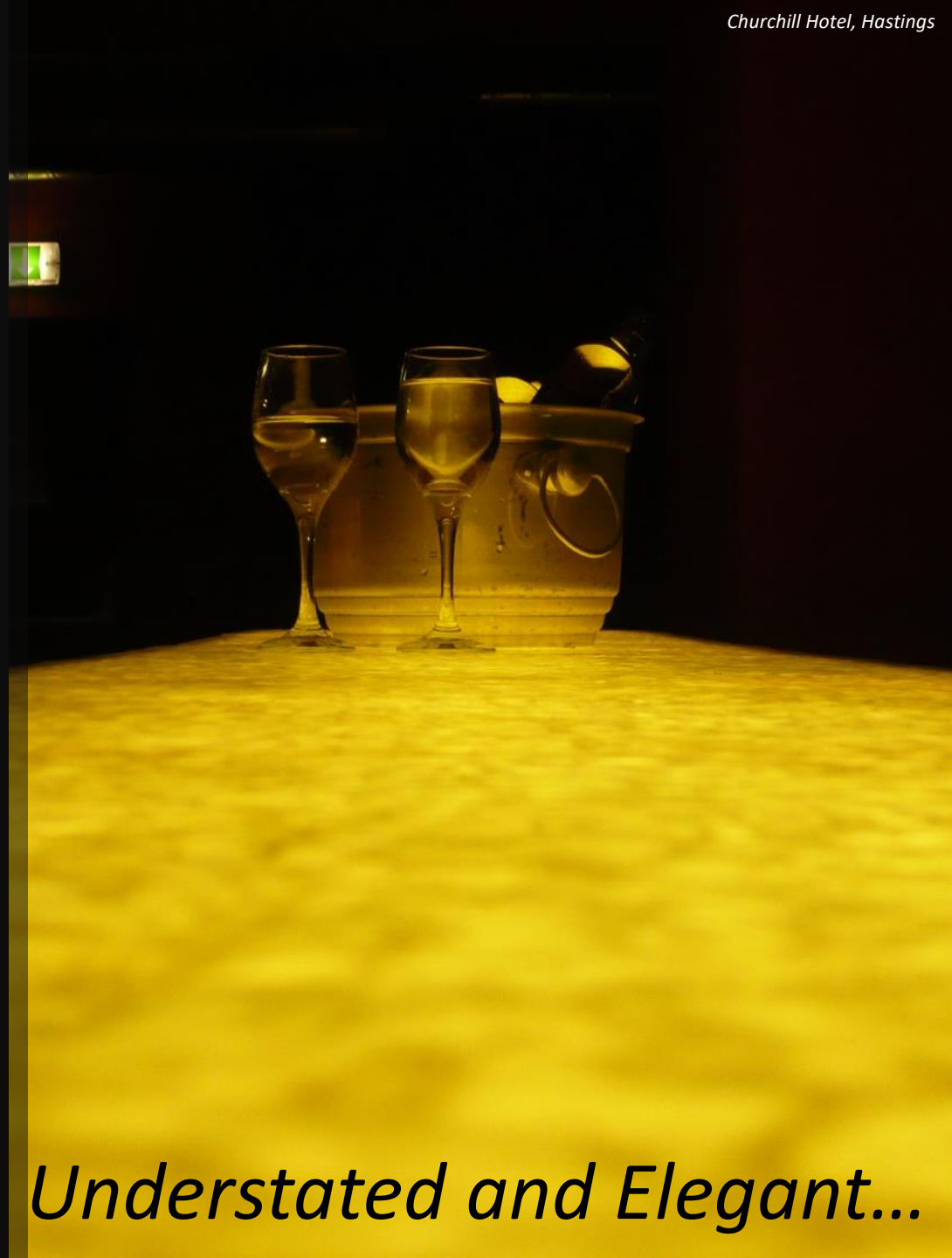




Brings 'Bling and Wow'...

Give them room to breathe...





'Butler' Understated and Elegant...

*Its all about the
architecture and journey...*





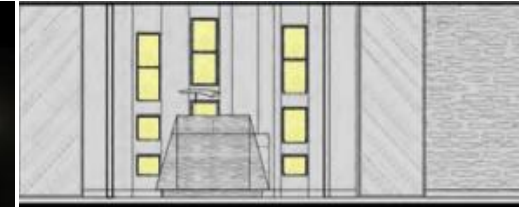
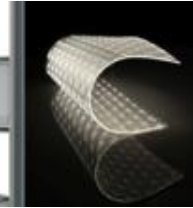
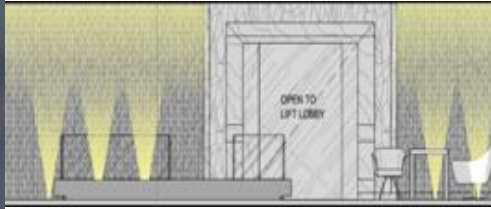
Considered and subtle...

'Servant'...



Hardworking and effective...



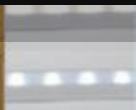


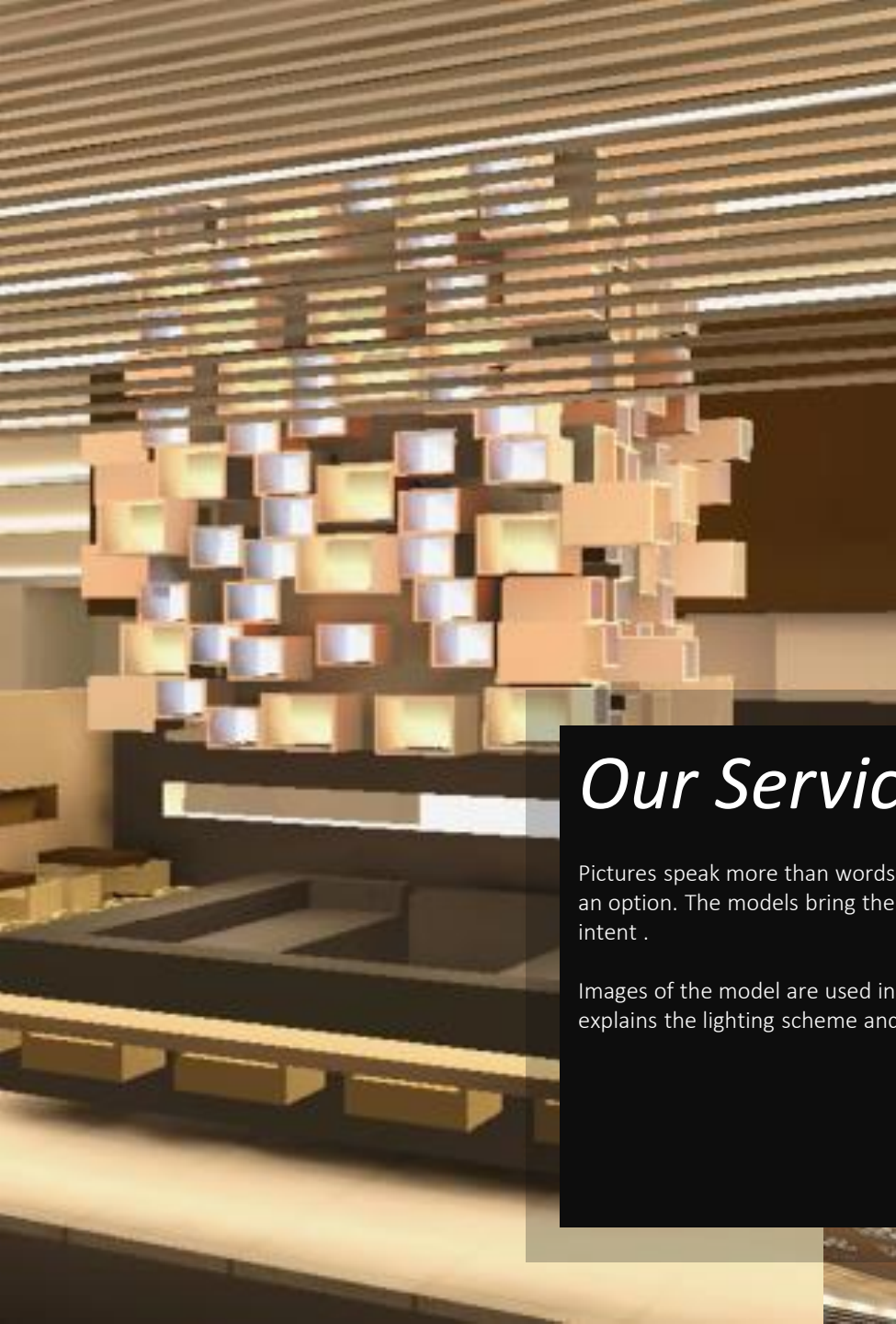
Our Services: Concept

The beginning stage of a project is where we let our creativity shine. Our whole team gets involved to brainstorm ideas using photographs, architectural drawings or an interior design package. Even at this early stage, we start to think about the installation to try and avoid construction delays and mistakes. We make sure to collaborate with the Architects, Interior designers, and the clients to ensure the correct style is projected.

We produce a concept document usually in A3 PPT & PDF format which illustrates our ideas and techniques. Images of the proposed fittings can also be shown at this stage, to provide an idea of equipment that could be used.

We are always open to suggestions and improvements and are continually searching for new ideas and inspiration by staying up-to-date with the latest technology and attending fairs and shows.





Our Services: Modelling/Schematic

Pictures speak more than words. This is one of the reasons we offer 3D modelling as either part of our package or as an option. The models bring the design to life; they help the client to visualise the space and understand our design intent .

Images of the model are used in our detailed design document, again in A3 PPT & PPT format. This second stage fully explains the lighting scheme and the logistics behind the design.



Our Services: Calculations

As well as detailed models, we can produce simple lighting calculations. This is to prove a scheme adheres to lighting requirements such as levels, glare rating and uniformity.

Emergency lighting calculations can also be provided.

A lighting report document is created to show the results of the calculations to demonstrate compliance with required standards.

25

50

100

200

300

400

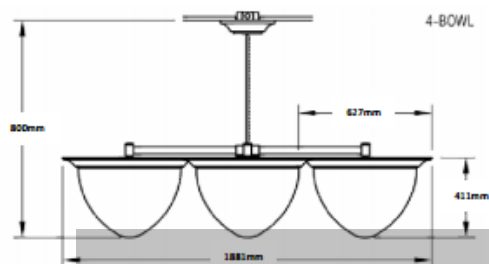
500

600

700

lighting force

LUMINAIRE DATA SHEET

PROJECT: Catalogue Number: AIP8623.L50.2.AN5T.277.DML4000K.OAH Manufacturer: Advent TYPE: P06Description: Multi-arm pendant, matches pendants downstairs.

Specifications:

Lamp Type:	<input type="text"/> LED	Lamp holder:	<input type="text"/> NA
Lamp Power (W):	<input type="text"/> 4x50	Lamp Output (lm):	<input type="text"/>
Circuit Power (W):	<input type="text"/> 201	Lamp lm/cw:	<input type="text"/> 0
Lamp Colour:	<input type="text"/> 3000K	CRI:	<input type="text"/> 80
Dimensions (mm):	<input type="text"/> Ø1881 x 800		
Colour & Finish:	<input type="text"/> Opal diffuser with antique-brass metalwork. Other fin		
Supply Voltage:	<input type="text"/> 230	Control Gear:	<input type="text"/> Integral 0-10V d
Protection (IP):	<input type="text"/> 20	Class:	<input type="text"/> 1 & 2

NOTES:

Other finishes available.

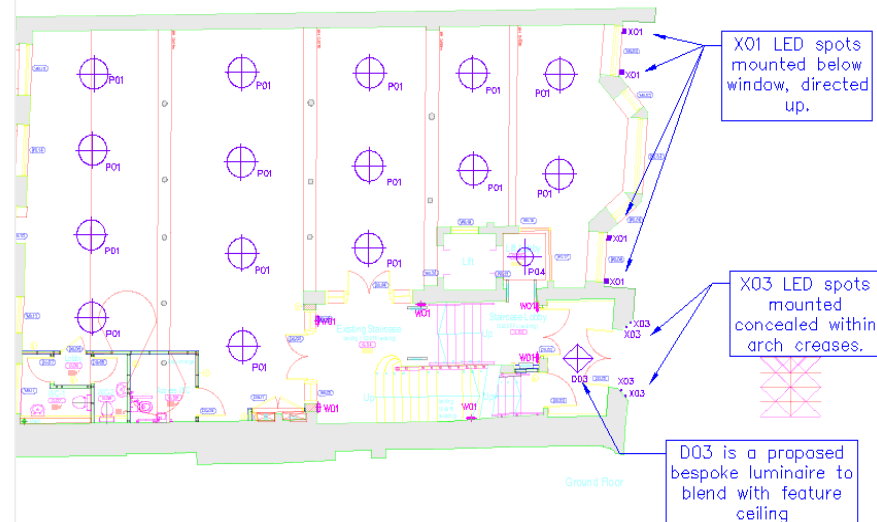
0-10V dimming only, converter required for DALI control

Our Services: Detail & Documentation

Fully detailed specifications of the light fittings are provided, with easy to follow lighting layout drawings, circuit schedules and luminaire schedules. All fittings throughout the detailed stage are referenced, which correspond to each document for clarity.

Lighting Force collaborate with suppliers to ensure the proposed fittings are appropriate. At this stage, we ensure coordination with all other services.

We ensure every design complies to all suitable regulations.



Ground Floor Lighting Layout

Drawing ref: 210001
 Drawn: AT
 Date: 02-10-2015
 Scale: 1:100 @ A3

lighting force

Head office:
 Lighting Force Ltd, 1 Tills Courtyard, High St,
 Battle, East Sussex, TN33 0AE

01424 775 459
 battle@lightingforce.co.uk

P3	Sixties pendants	6	8.7	0.22	Mains	
FF1	Divas3 micro profile	4	13	0.22	1-10V	NO & WATT IN METERS
D1	Dim to warm 14W, trimless Downlight	12	14.4	0.72	Mains	
D2	DIVA DUAL micro profile	16.5	11	0.76	1-10V	NO & WATT IN METERS
P3	3 "Swag" sixties pendants on track	3	8.7	0.11	Mains	Requires track adaptor, and co

The background of the slide is a light gray architectural wireframe of a building, showing various structural elements like walls, windows, and corridors. In the center of the image, there is a cluster of numerous small, colorful, abstract shapes that resemble stylized leaves or petals. These shapes are in shades of purple, magenta, red, orange, and yellow, and they are arranged in a way that suggests they are falling or floating from above. The overall composition is modern and artistic.

Other Services:

Other services we can offer include:

- Design of control systems
- Budgeting
- Procurement management
- Planning applications
- Energy use analysis
- Daylighting
- Bespoke luminaire design

Portfolio

Transport:

Paddington and Farringdon Crossrail Stations
London & Midlands Railway (Tamworth, Telford and
Berkhamsted stations)
Manchester Airport Escape Lounge

Commercial:

Discovery Channel European roll-out
Network Rail National Centre, Milton Keynes
Yahoo HQ, Geneva
Castle Quay development, St Helier
Trinity House, London EC2
Meyer Brown, Bishopsgate
The Willis Building, London EC2
KPMG roll-out (Glasgow, Milton Keynes, Manchester,
Birmingham, Farringdon, Nottingham, Leicester)
Oxheadquarters building, Chiswick

Retail:

UGG stores at Westfield and Covent Garden
Oxfam Boutiques
Vans European roll-out
Henley's
Omega Watches
Prospect Place Retail Park, Dartford
Smethwick Retail Park, Birmingham
Queensgate Retail Park, Harlow
Borehamwood Retail Park
Erith Town Centre
Nugent Shopping Centre, Orpington
Friars' Square Shopping Centre, Aylesbury
Thomas Pink, Cheshire Oak

Education:

Aldwych Learning Resource Centre Brighton,
Brighton University, Falmer
St John Fisher School, Perivale
St Anselm's Primary School, Harrow
St Margaret Clitherow Primary School, Neasden
Dartford Grammar School
Hastings Library, Hastings



Network Rail National Centre, Milton Keynes

Portfolio

Hotels:

Luton Hoo Spa
Ashdown Forest Hotel
Royal Yacht Hotel Jersey
Savill Court, Egham
Penny Hill Spa, Bagshot
-Intercontinental Hotel St James
Le Meridien, Cairo
Sands Boutique Hotel, Margate
Mercure Hotel, Manchester
Sheraton Four Points, Medina
Sheraton Medina
Hilton Doubletree JBR Dubai
Indio Hotel, Durham
Bear Hotel, Southoak
ICH Muscat Intercontinental Hotel, Oman
Crowne Plaza Dubai Marina, Dubai

Leisure:

Xscape indoor snow arena and Malls
Bishop Auckland Swimming Pool
Oyster Box & Spinnakers restaurants, St Brelade, Jersey
Hollywood Bowl, Norwich
Harry's Bar, City of London
Spartak Stadium, Moscow
Samuel Jones, Exeter

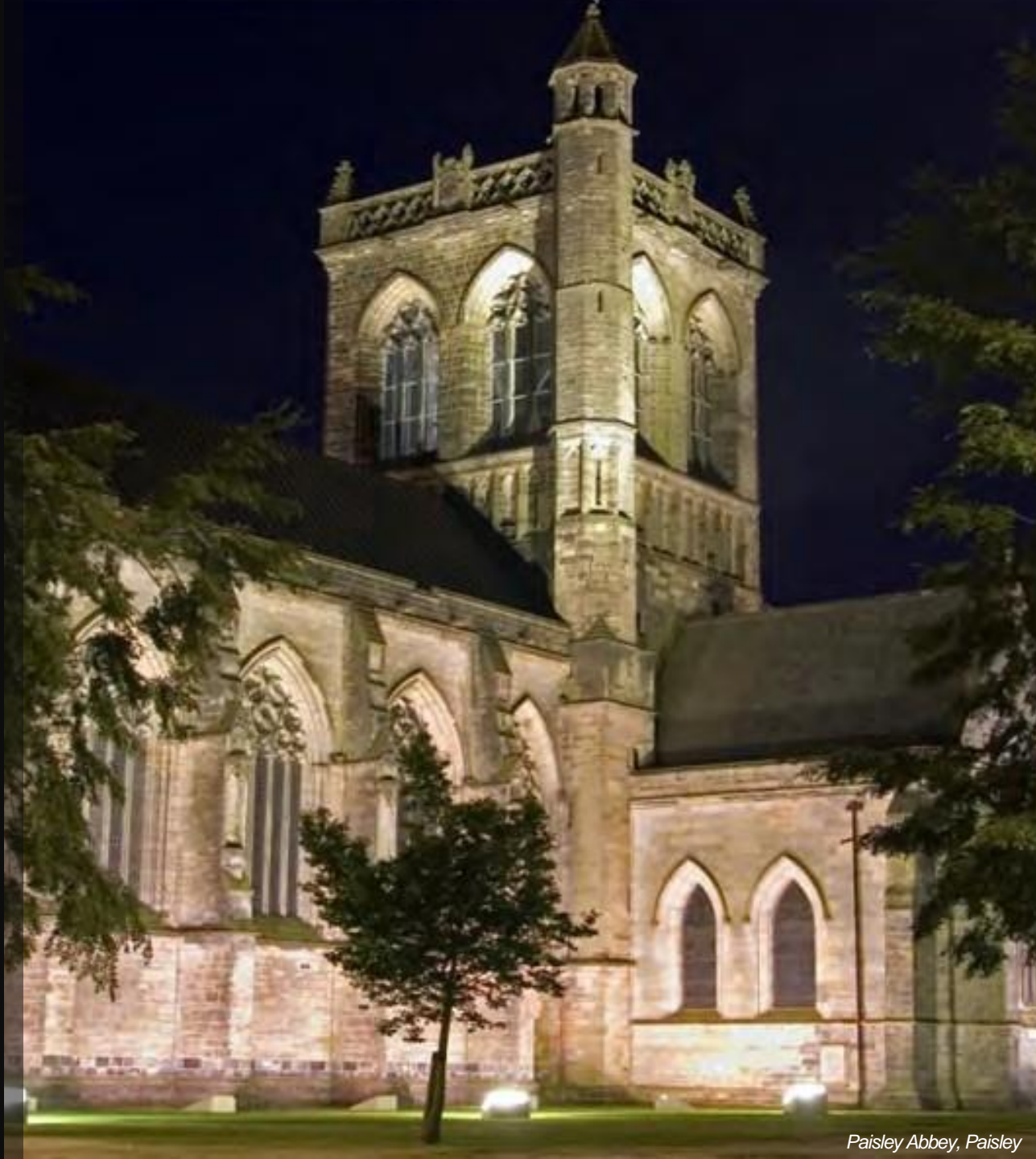
Public & Historic buildings; places of worship:

Royal College of Physicians in Ireland, Dublin
Christ Church, St Leonard's-on-Sea
St Ann's Church, Tottenham
Church of Our Lady & St Vincent de Paul, Potter's Bar
Reigate Baptist Church
Epsom Methodist Church
St Leonard's Seafront & Clocktower
Paisley Landmark buildings floodlighting programme - Paisley Abbey, Thomas Coates
Memorial Church, John Neilson Institute and Anchor Wharf
Kernall Park Cemetery
Gouray Church, Jersey

Museums & galleries:

Falmouth Maritime Museum
Imperial War Museum
The Courtauld Institute
Battle of the Somme exhibition, Thiepval

Plus numerous residences, including listed buildings.



Paisley Abbey, Paisley



lighting force

Tel

44(0) 1424 775 459

Email

design@lightingforce.co.uk

Website

www.lightingforce.co.uk